

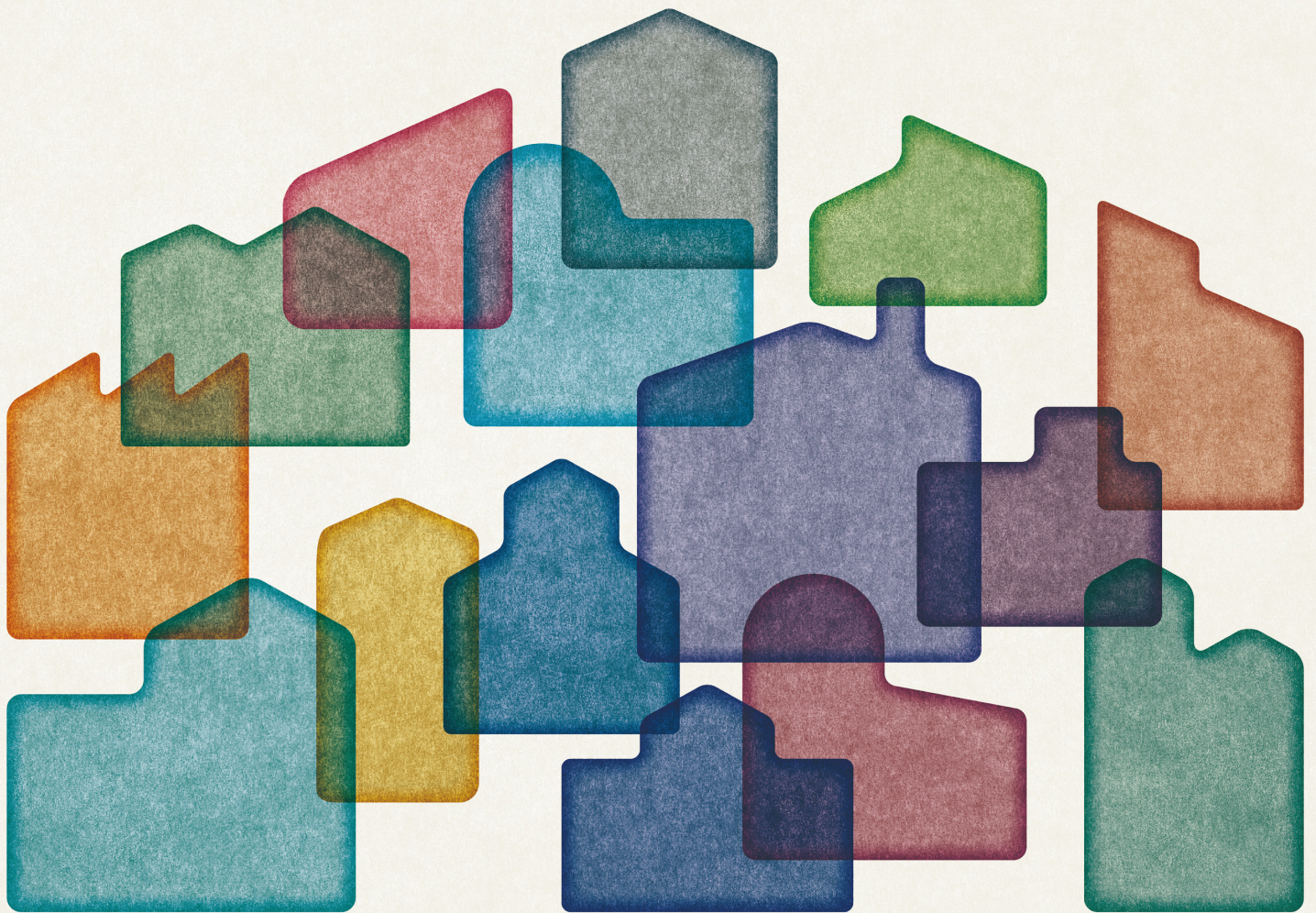
HIAS Health Symposium commemorating Hitotsubashi University's 150th Anniversary

# Primary Health Care and Social Science - Policies and Practices for Healthy Living

As society undergoes various changes, including demographic transition, pandemics and climate change, it is vital for those in the fields of health, medical care, and welfare to work together to support the community health.

The symposium will discuss linkages between community health and health system arrangements, such as provider payments, information dissemination, and community health stakeholder coordination.

To stimulate discussion and broaden understanding of community health, the symposium will deliver a global health perspective with insights from multi-country studies on financing primary health care.



2024. FRI  
**11.22**  
18:00–20:00

**Date: Friday, 22 November 2024, 18:00 – 20:00 (Doors open at 17:30) (JST)**

**Venue: Hitotsubashi Hall (National Center of Sciences Building 2F, 2-1-2 Hitotsubashi, Chiyoda-ku, Tokyo 101-8439)**

Free participation: Registration required by Friday, 15 November

Please register through the QR code or the following URL: [https://health-economics.hias.hit-u.ac.jp/event\\_english/20241122](https://health-economics.hias.hit-u.ac.jp/event_english/20241122)

If registrations exceed seating capacity at the symposium venue, participants may be asked to attend online.

Those located overseas or far from the symposium venue will be able to attend online.

Language: Japanese and English (Simultaneous interpretation available)

Organised by: Research Center for Health Policy and Economics, Hitotsubashi Institute for Advanced Study (HIAS Health)

Website: <https://health-economics.hias.hit-u.ac.jp/english/> SNS: <https://x.com/HIASHealth2825>

Inquiries: HIAS Health (<https://health-economics.hias.hit-u.ac.jp/english/contact/>)



# Primary Health Care and Social Science - Policies and Practices for Healthy Living

HIAS Health Symposium commemorating Hitotsubashi University's 150th Anniversary

As society undergoes various changes, including demographic transition, pandemics and climate change, it is vital for those in the fields of health, medical care, and welfare to work together to support the community health. The symposium will discuss linkages between community health and health system arrangements, such as provider payments, information dissemination, and community health stakeholder coordination. To stimulate discussion and broaden understanding of community health, the symposium will deliver a global health perspective with insights from multi-country studies on financing primary health care.

Programme:

## 18:00-18:05 Introduction

Opening remarks Satoshi Nakano, President, Hitotsubashi University

About the symposium Ayako Honda, Professor, HIAS Health / Graduate School of Economics, Hitotsubashi University

## 18:05-19:00 Part 1: Community Health and the Japanese Health System



"Health literacy and Primary Health Care:

What information do people need to gain knowledge about health and the health system?"

Masako Ii, Professor, Graduate School of Economics / School of International and Public Policy, Hitotsubashi University



"Strategic purchasing for community health:

Revision of payment rates to facilitate coordination between health, medicine and long-term care systems"

Takashi Oshio, Professor, Institute of Economic Research, Hitotsubashi University; Chairman, Central Social Insurance Medical Council



"Home-based care: Working with community stakeholders"

Jun Sasaki, Chairman of the Board of Directors, Yushoukai Medical Corporation

## 19:00-19:20 Part 2: Global Health and Primary Health Care



"Financing primary health care: putting people at the center" (Lancet Global Health Commission)

Kara Hanson, Professor, Faculty of Public Health and Policy, London School of Hygiene & Tropical Medicine; President, International Health Economics Association

## 19:20-19:55 Part 3: Discussion

Comments from discussants



Shuichiro Hayashi,

Director, Medical Division, Health Insurance Bureau, Ministry of Health, Labour and Welfare



Motohiro Sato,

Professor, Graduate School of Economics, Hitotsubashi University



Shinji Yamashige,

Professor, Graduate School of Economics / School of International and Public Policy, Hitotsubashi University

Discussion with the audience

## 19:55-20:00 Closing remarks

Yasuhiro Otsuki, Board Member and Executive Vice President, Hitotsubashi University

**Date: Friday, 22 November 2024, 18:00 – 20:00 (Doors open at 17:30) (JST)**

**Venue: Hitotsubashi Hall**

**(National Center of Sciences Building 2F, 2-1-2 Hitotsubashi, Chiyoda-ku, Tokyo 101-8439)**

Free participation: Registration required by Friday, 15 November

Please register through the QR code or

the following URL: [https://health-economics.hias.hit-u.ac.jp/event\\_english/20241122](https://health-economics.hias.hit-u.ac.jp/event_english/20241122)

If registrations exceed seating capacity at the symposium venue, participants may be asked to attend online.

Those located overseas or far from the symposium venue will be able to attend online.

Language: Japanese and English (Simultaneous interpretation available)

Organised by: Research Center for Health Policy and Economics,

Hitotsubashi Institute for Advanced Study (HIAS Health)

Website: <https://health-economics.hias.hit-u.ac.jp/english/>

SNS: <https://x.com/HIASHealth2825>

Inquiries: HIAS Health (<https://health-economics.hias.hit-u.ac.jp/english/contact/>)

